

TaylorMade
Solutions
are welcome!

wittig

Capacitor Holder

Capacitor Spacer

Capacitor Washer

Capacitor Insulation

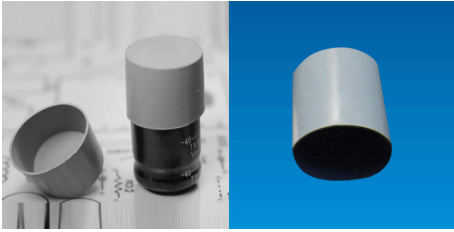
Capacitor Accessories



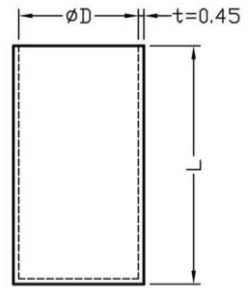
www.wittig-electronic.de

Capacitor Insulation

E-CAP Insulation $\varnothing 6.3 \sim 18$



Material: Silicone
 Flame class: 94V-0
 Color: Gray

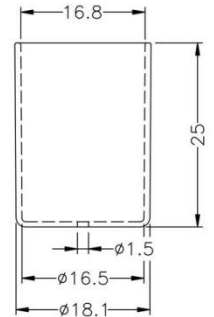


PART NO	D	L
ECC-001	$\varnothing 7.8$	26.0
ECC-002	$\varnothing 13.2$	15.0
90F10147	$\varnothing 16.7$	15.0
90F10146	$\varnothing 18.5$	25.0

E-CAP Insulation $\varnothing 16$

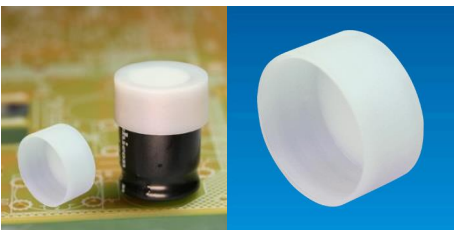


Material: Nylon66
 Flame class: 94V-0
 Color: Black/ Natural



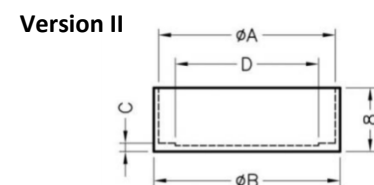
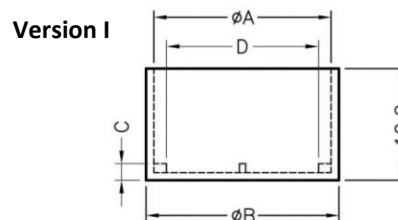
PART NO	D	L	C
ECC-003	$\varnothing 16.5$	25	0.8

E-CAP Insulation $\varnothing 16 \sim 25$



Material: Nylon66
 Flame class: 94V-0
 Color: Natural

PART NO	A	B	C	D	Version
ECC-004	$\varnothing 16.7$	$\varnothing 18.2$	1.75	13.7	I
ECC-005	$\varnothing 18.7$	$\varnothing 20.2$	1.75	15.7	I
ECC-006	$\varnothing 22.0$	$\varnothing 23.4$	1.05	18.0	II
90F10161	$\varnothing 26.0$	$\varnothing 27.2$	0.75	22.0	II



Capacitor Insulation

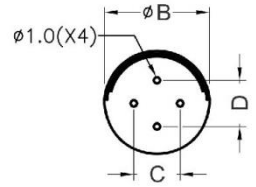


E-CAP Insulation $\varnothing 10 \sim 16$

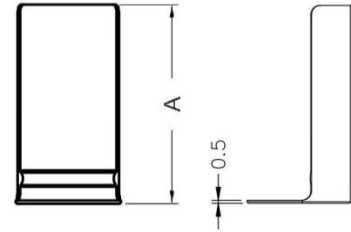
Material: Nylon66

Flame class: 94V-0

Color: Black/ Natural



PART NO	A	B	C	D
ECC-007	24.5	11.2	5.0	5.0
ECC-008	31.8	16.5	7.4	7.4



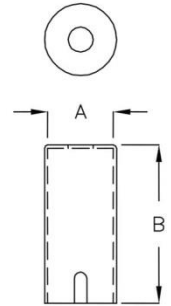
Capacitor Insulation

E-CAP Tube Ø10



Material: PP
Flame class: 94V-0
Color: Black

PART NO	A	B
ECC-009	Ø10.5	27.5

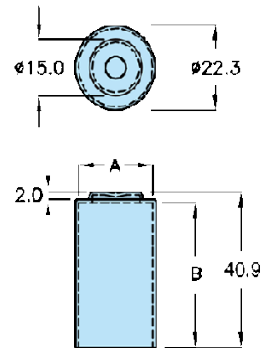


E-CAP Tube Ø20



Material: Nylon66
Flame class: 94V-2
Color: Black

PART NO	A	B
ECC-010	Ø20.5	38.05

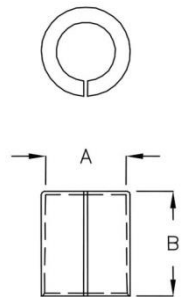


E-CAP Tube Ø12



Material: PP
Flame class: 94V-0
Color: Black

PART NO	A	B
ECC-011	Ø12.3	16.0

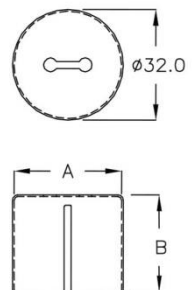


E-CAP Tube Ø30

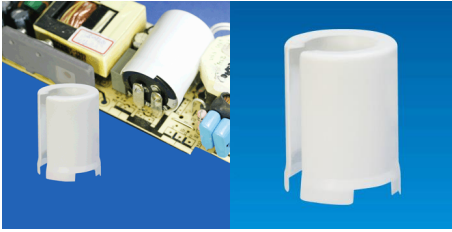


Material: PP
Flame class: 94V-0
Color: Black

PART NO	A	B
ECC-012	Ø31.0	28.0



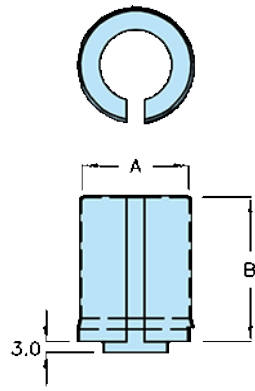
Capacitor Insulation



E-CAP Tube Ø30 H41

Material: Nylon66
Flame class: 94V-0
Color: Black/ White

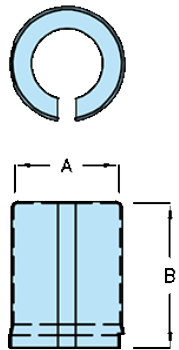
PART NO	A	B
ECC-013	Ø30.0	41.0



E-CAP Tube Ø30 H51

Material: Nylon66
Flame class: 94V-0
Color: Black/ White

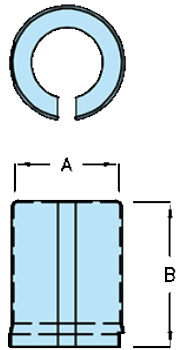
PART NO	A	B
ECC-014	Ø30.0	51.0



E-CAP Tube Ø30 H50

Material: PP
Flame class: 94V-0
Color: Black

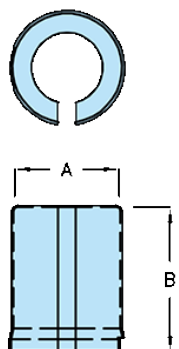
PART NO	A	B
ECC-015	Ø30.0	50.2



E-CAP Tube Ø31 H55

Material: PP
Flame class: 94V-0
Color: Black

PART NO	A	B
ECC-016	Ø31.6	55.5



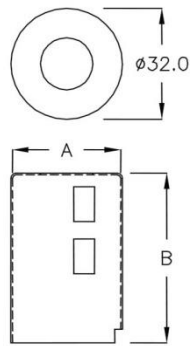
Capacitor Insulation

E-CAP Tube Ø31 H49

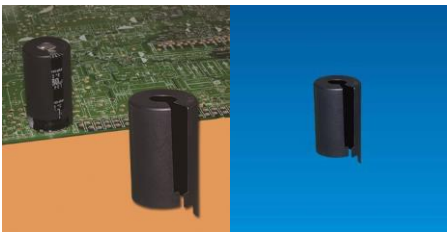


Material: PP
Flame class: 94V-0
Color: Black

PART NO	A	B
ECC-017	Ø31.0	49.0

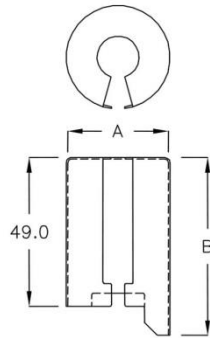


E-CAP Tube Ø31 H58



Material: PP
Flame class: 94V-0
Color: Black

PART NO	A	B
ECC-018	Ø31.0	58.0



Capacitor Accessories



E-CAP Cable Holder $\varnothing 10$

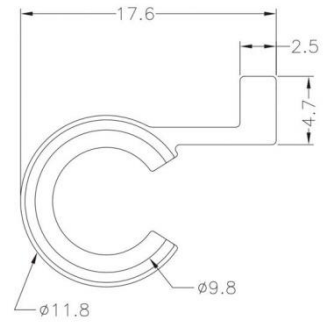
Material: Nylon66

Flame class: 94V-0

Color: Black/ Natural

PART NO

ECZ-001



HEADQUARTER

wittig ELECTRONIC GmbH

Gewerbegebiet Süd Nr. 5
D-09618 Brand-Erbisdorf

☎ +49 037322 5280-0

✉ info@wittig-electronic.de

www.wittig-electronic.de

SUBSIDIARY SOUTH-EAST-EUROPE

wittig ELECTRONIC s.r.o.

Prumyslová 2151/4
CZ-68001 Boskovice

☎ +420 515 550-805

✉ wittig@wittig-electronic.cz

www.wittig-electronic.cz

TaylorMade
Solutions
are welcome!