

RWF Series

- Rated voltage range up to 700V_{dc}
- High ripple capability
- Endurance with ripple current : 5,000 hours at 85°C
- Wide variety case sizes from φ50 to φ100
- RoHS Compliant



◆ SPECIFICATIONS

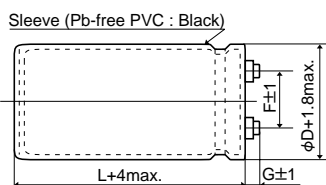
Items	Characteristics		
Category	-25 to +85°C		
Temperature Range	-25 to +85°C		
Rated Voltage Range	350 to 700V _{dc}		
Capacitance Tolerance	±20% (M) (at 20°C, 120Hz)		
Leakage Current	I=0.02CV or 5mA, whichever is smaller. Where, I : Max. leakage current (μA), C : Nominal capacitance (μF), V : Rated voltage (V) (at 20°C after 5 minutes)		
Dissipation Factor (tanδ)	0.25 max. (at 20°C, 120Hz)		
Low Temperature Characteristics	Rated voltage (V _{dc})	350 to 450V	500 to 700V
	C(-25°C) / C(+20°C)	≥0.7	≥0.65
Insulation Resistance	When measured between the terminals shorted each other and the mounting clamp on the insulating sleeve covering the case by using an insulation resistance meter of 500V _{dc} , the insulation resistance shall not be less than 100MΩ.		
Insulation Withstanding Voltage	When a voltage of 2000Vac is applied for 1 minute between the terminals shorted each other and the mounting clamp on the insulating sleeve covering the case, there shall not be electrical damage.		
Endurance	The following specifications shall be satisfied when the capacitors are restored to 20°C after subjected to DC voltage with the rated ripple current is applied for 5000 hours at 85°C.		
	Capacitance change	≤±20% of the initial value	
	D.F. (tanδ)	≤200% of the initial specified value	
	Leakage current	≤The initial specified value	
Shelf Life	The following specifications shall be satisfied when the capacitors are restored to 20°C after exposing them for 500 hours at 85°C without voltage applied.		
	Capacitance change	≤±20% of the initial value	
	D.F. (tanδ)	≤200% of the initial specified value	
	Leakage current	≤The initial specified value	

◆ DIMENSIONS (Screw-Mount) [mm]

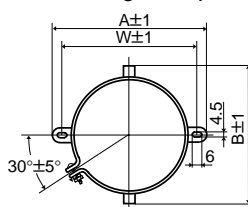
● Terminal Code : LG

● Mounting Clamp Code : B

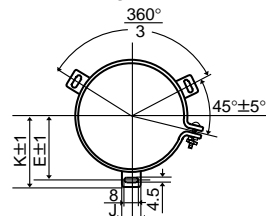
● Mounting Clamp Code : C



φ50 & φ63.5 : G=6
φ76 & φ89 : G=5
φ100 : G=10



φD	A	B	W	F
50	78.0	64.0	68.0	22.4
63.5	90.0	76.0	80.0	28.0
76	104.5	90.0	93.5	31.5



φD	E	K	F	J
50	32.5	37.0	22.4	14.0
63.5	38.1	43.5	28.0	14.0
76	44.5	50.0	31.5	14.0
89	50.8	56.5	31.5	16.0
100	56.5	63.4	41.5	18.0

<Screw specifications>

φ50 to φ89

Plus hexagon-headed screw :

M5×0.8×10

Maximum screw tightening torque :

3.23Nm

φ100

Cross-recessed head (Phillips)

screw : M8×1.25×16

Spring washer

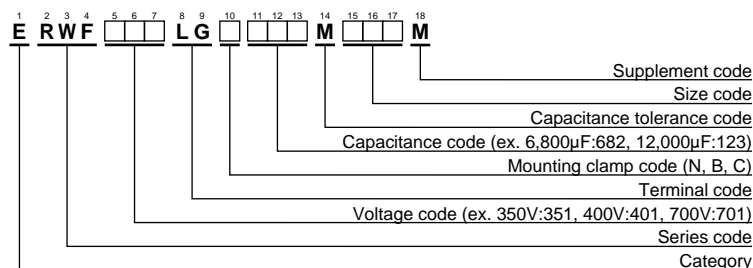
Washer

Maximum screw tightening torque :

6.31Nm

* The screw and the mounting clamp are separately supplied and not attached to the product.

◆ PART NUMBERING SYSTEM



Specifications in this bulletin are subject to change without notice.

◆STANDARD RATINGS

WV (Vdc)	Cap (μF)	Case size φD×L(mm)	tanδ	Rated ripple current (Arms/85°C,120Hz)	Part No.	WV (Vdc)	Cap (μF)	Case size φD×L(mm)	tanδ	Rated ripple current (Arms/85°C,120Hz)	Part No.	
350	1,200	50×60	0.25	4.90	ERWF351LGC122MC60M	500	1,800	63.5×115	0.25	6.00	ERWF501LGC182MDB5M	
	1,800	50×75	0.25	6.50	ERWF351LGC182MC75M		2,200	63.5×130	0.25	6.90	ERWF501LGC222MDD0M	
	2,200	50×85	0.25	7.50	ERWF351LGC222MC85M		2,700	76×115	0.25	8.10	ERWF501LGC272MEB5M	
	2,200	50×96	0.25	7.70	ERWF351LGC222MC96M		3,300	63.5×190	0.25	10.1	ERWF501LGC332MDK0M	
	2,700	50×115	0.25	9.30	ERWF351LGC272MCB5M		3,300	76×130	0.25	9.40	ERWF501LGC332MED0M	
	3,300	50×130	0.25	10.8	ERWF351LGC332MCD0M		3,900	76×170	0.25	11.5	ERWF501LGC392MEH0M	
	3,900	63.5×115	0.25	12.1	ERWF351LGC392MDB5M		4,700	89×155	0.25	13.2	ERWF501LGC472MFF5M	
	4,700	63.5×130	0.25	14.0	ERWF351LGC472MDD0M		5,600	89×170	0.25	15.1	ERWF501LGC562MFH0M	
	5,600	63.5×155	0.25	16.6	ERWF351LGC562MDF5M		6,800	89×190	0.25	17.4	ERWF501LGC682MFK0M	
	5,600	76×115	0.25	16.1	ERWF351LGC562MEB5M		550	680	50×96	0.25	2.90	ERWF551LGC681MC96M
	6,800	63.5×190	0.25	20.0	ERWF351LGC682MDK0M			820	50×105	0.25	3.40	ERWF551LGC821MCA5M
	6,800	76×130	0.25	18.6	ERWF351LGC682MED0M			1,000	50×115	0.25	3.90	ERWF551LGC102MCB5M
	8,200	76×155	0.25	22.2	ERWF351LGC822MEF5M			1,500	63.5×115	0.25	5.40	ERWF551LGC152MDB5M
	10,000	76×170	0.25	25.2	ERWF351LGC103MEH0M			1,800	63.5×130	0.25	6.30	ERWF551LGC182MDD0M
	12,000	89×155	0.25	29.1	ERWF351LGC123MFF5M			2,200	76×115	0.25	7.30	ERWF551LGC222MEB5M
	15,000	89×190	0.25	35.7	ERWF351LGC153MFK0M			2,700	63.5×190	0.25	9.10	ERWF551LGC272MDK0M
	18,000	100×190	0.25	36.9	ERWF351LGC183MGK0M			2,700	76×130	0.25	8.50	ERWF551LGC272MED0M
	22,000	100×250	0.25	46.1	ERWF351LGC223MGR0M			3,900	76×170	0.25	11.5	ERWF551LGC392MEH0M
	400	1,000	50×60	0.25	4.40			ERWF401LGC102MC60M	3,900	89×155	0.25	12.0
		1,500	50×75	0.25	5.90		ERWF401LGC152MC75M	4,700	89×170	0.25	13.8	ERWF551LGC472MFH0M
		1,800	50×85	0.25	6.80		ERWF401LGC182MC85M	5,600	89×190	0.25	15.8	ERWF551LGC562MFK0M
		1,800	50×96	0.25	7.00		ERWF401LGC182MC96M	600	680	50×105	0.25	3.10
2,200		50×105	0.25	8.00	ERWF401LGC222MCA5M	820	50×110		0.25	3.50	ERWF601LGC821MCB0M	
2,700		50×130	0.25	9.80	ERWF401LGC272MCD0M	1,000	50×130		0.25	4.10	ERWF601LGC102MCD0M	
3,300		63.5×115	0.25	11.1	ERWF401LGC332MDB5M	1,200	63.5×105		0.25	4.70	ERWF601LGC122MDA5M	
3,900		63.5×130	0.25	12.7	ERWF401LGC392MDD0M	1,500	63.5×130		0.25	5.70	ERWF601LGC152MDD0M	
4,700		63.5×155	0.25	15.2	ERWF401LGC472MDF5M	1,800	76×115		0.25	6.60	ERWF601LGC182MEB5M	
4,700		76×115	0.25	14.7	ERWF401LGC472MEB5M	2,200	63.5×190		0.25	8.20	ERWF601LGC222MDK0M	
5,600		63.5×190	0.25	18.2	ERWF401LGC562MDK0M	2,200	76×130		0.25	7.70	ERWF601LGC222MED0M	
5,600		76×130	0.25	16.9	ERWF401LGC562MED0M	3,300	76×170		0.25	10.6	ERWF601LGC332MEH0M	
6,800		76×155	0.25	20.2	ERWF401LGC682MEF5M	3,900	89×155		0.25	12.0	ERWF601LGC392MFF5M	
8,200		76×170	0.25	22.8	ERWF401LGC822MEH0M	4,400	89×170	0.25	13.4	ERWF601LGC442MFH0M		
10,000		89×155	0.25	26.6	ERWF401LGC103MFF5M	4,700	89×190	0.25	14.5	ERWF601LGC472MFK0M		
12,000		89×170	0.25	30.0	ERWF401LGC123MFH0M	650	560	50×96	0.25	2.70	ERWF651LGC561MC96M	
15,000		100×190	0.25	33.7	ERWF401LGC153MGK0M		680	50×110	0.25	3.10	ERWF651LGC681MCB0M	
18,000		100×220	0.25	37.4	ERWF401LGC183MGN0M		820	50×130	0.25	3.70	ERWF651LGC821MCD0M	
450	820	50×60	0.25	4.00	ERWF451LGC821MC60M		1,000	63.5×105	0.25	4.30	ERWF651LGC102MDA5M	
	1,000	50×75	0.25	4.80	ERWF451LGC102MC75M		1,200	63.5×130	0.25	5.10	ERWF651LGC122MDD0M	
	1,200	50×85	0.25	5.60	ERWF451LGC122MC85M		1,500	76×115	0.25	6.00	ERWF651LGC152MEB5M	
	1,200	50×96	0.25	5.70	ERWF451LGC122MC96M		1,800	63.5×190	0.25	7.50	ERWF651LGC182MDK0M	
	1,500	50×96	0.25	6.30	ERWF451LGC152MC96M		1,800	76×130	0.25	6.90	ERWF651LGC182MED0M	
	1,800	50×115	0.25	7.60	ERWF451LGC182MCB5M		2,700	76×170	0.25	9.60	ERWF651LGC272MEH0M	
	2,200	50×130	0.25	8.80	ERWF451LGC222MCD0M		3,300	89×155	0.25	11.1	ERWF651LGC332MFF5M	
	2,700	63.5×115	0.25	10.1	ERWF451LGC272MDB5M	3,700	89×170	0.25	12.3	ERWF651LGC372MFH0M		
	3,300	63.5×130	0.25	11.7	ERWF451LGC332MDD0M	4,200	89×190	0.25	13.7	ERWF651LGC422MFK0M		
	3,900	63.5×155	0.25	13.8	ERWF451LGC392MDF5M	700	390	50×96	0.25	2.20	ERWF701LGC391MC96M	
	3,900	76×115	0.25	13.4	ERWF451LGC392MEB5M		470	50×110	0.25	2.60	ERWF701LGC471MCB0M	
	4,700	63.5×190	0.25	16.7	ERWF451LGC472MDK0M		560	50×130	0.25	3.10	ERWF701LGC561MCD0M	
	4,700	76×130	0.25	15.5	ERWF451LGC472MED0M		680	63.5×105	0.25	3.50	ERWF701LGC681MDA5M	
	5,600	76×155	0.25	18.3	ERWF451LGC562MEF5M		1,000	63.5×130	0.25	4.70	ERWF701LGC102MDD0M	
	6,800	76×170	0.25	20.7	ERWF451LGC682MEH0M		1,200	76×115	0.25	5.40	ERWF701LGC122MEB5M	
	8,200	89×155	0.25	24.1	ERWF451LGC822MFF5M		1,500	63.5×190	0.25	6.80	ERWF701LGC152MDK0M	
	10,000	89×170	0.25	27.8	ERWF451LGC103MFH0M		1,500	76×130	0.25	6.30	ERWF701LGC152MED0M	
	12,000	100×190	0.25	29.3	ERWF451LGC123MGK0M		2,200	76×190	0.25	9.10	ERWF701LGC222MEK0M	
15,000	100×250	0.25	37.0	ERWF451LGC153MGR0M	2,200		89×155	0.25	9.00	ERWF701LGC222MFF5M		
500	820	50×96	0.25	3.20	ERWF501LGC821MC96M	2,700	89×170	0.25	10.5	ERWF701LGC272MFH0M		
	1,000	50×105	0.25	3.70	ERWF501LGC102MCA5M	3,000	89×190	0.25	11.6	ERWF701LGC302MFK0M		
	1,200	50×115	0.25	4.30	ERWF501LGC122MCB5M							

Please confirm our company in case that you order for φ100 items which are temporary standard.

◆RATED RIPPLE CURRENT MULTIPLIERS

●Frequency Multipliers

Frequency (Hz)	50	120	300	1k	3k
Coefficient	0.8	1.0	1.1	1.3	1.4

Note : The endurance of capacitors is shorted with internal heating produced by ripple currents at the rate of halving the lifetime with every 5 to 10°C rise. When long life performance is required in actual use, the rms ripple current has to be reduced. Also, for the RWF series capacitors, using them at operating voltage less than their rated voltage can extend their lifetime. For the details, please contact a representative of Nippon Chemi-Con.

Specifications in this bulletin are subject to change without notice.