

HSB Series

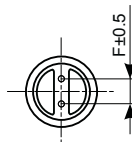
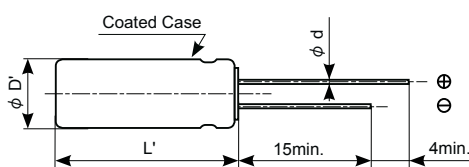
- High reliability and high voltage are realized by hybrid electrolyte
- Endurance with ripple current : 5,000 hours at 105°C
- Rated voltage range : 25 to 63V_{dc}, Capacitance range : 100 to 330μF
- For industrial equipment power supply and communication base station power supply
- RoHS Compliant

◆ SPECIFICATIONS

Items	Characteristics
Category	
Temperature Range	-55 to +105°C
Rated Voltage Range	25 to 63V _{dc}
Capacitance Tolerance	±20% (M) (at 20°C , 120Hz)
Leakage Current	I=0.05CV Where, I : Max. leakage current (μA), C : Nominal capacitance (μF), V : Rated voltage (V) (at 20°C after 2 minutes)
Dissipation Factor (tan δ)	0.16 max. (at 20°C , 120Hz)
Low Temperature Characteristics (Max. Impedance Ratio)	Z(-25°C) / Z(+20°C) ≤ 1.5 Z(-55°C) / Z(+20°C) ≤ 2.0 (at 100kHz)
Endurance	The following specifications shall be satisfied when the capacitors are restored to 20°C after subjected to DC voltage with the rated ripple current is applied (the peak voltage shall not exceed the rated voltage) for 5,000 hours at 105°C .
	Capacitance change ≤ ±30% of the initial value
	D.F. (tan δ) ≤ 200% of the initial specified value
	ESR ≤ 200% of the initial specified value
	Leakage current ≤ The initial specified value
Shelf Life	The following specifications shall be satisfied when the capacitors are restored to 20°C after exposing them for 1,000 hours at 105°C without voltage applied. Before the measurement, the capacitor shall be preconditioned by applying voltage according to Item 4.1 of JIS C 5101-4.
	Capacitance change ≤ ±30% of the initial value
	D.F. (tan δ) ≤ 200% of the initial specified value
	ESR ≤ 200% of the initial specified value
	Leakage current ≤ The initial specified value

◆ DIMENSIONS [mm]

- Terminal Code : E



Size code	JC5
φ D	10
φ d	0.6
F	5.0
φ D'	φ D+0.5 max.
L'	L+1.5 max.

◆ MARKING

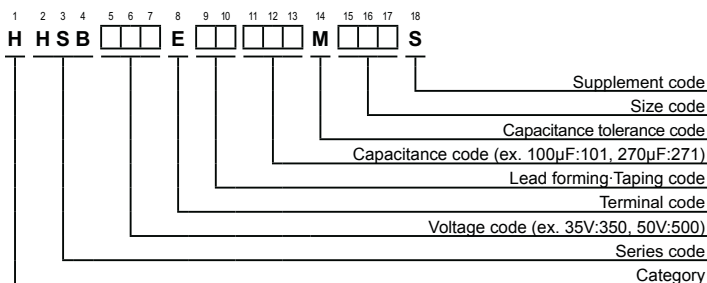
EX) 35V270μF



- Rated voltage symbol

Rated voltage (V _{dc})	Symbol
25	E
35	V
50	H
63	J

◆ PART NUMBERING SYSTEM



Please contact us for mass production schedule.
Specifications in this bulletin are subject to change without notice.

HSB Series

◆ STANDARD RATINGS

WV (Vdc)	Cap (μ F)	Case size ϕ D×L(mm)	ESR (m Ω max./20°C , 100kHz)	Rated ripple current (mA rms/105°C , 100kHz)	Part No.
25	330	10×12.5	16	3,100	HHSB250E□□331MJC5S
35	270	10×12.5	17	3,000	HHSB350E□□271MJC5S
50	120	10×12.5	19	2,800	HHSB500E□□121MJC5S
63	100	10×12.5	20	2,600	HHSB630E□□101MJC5S

□□ :Enter the appropriate lead forming or taping code.

◆ RECOMMENDED SOLDERING HEAT CONDITIONS

Preheat :150°C max. 120 seconds max.

Flow soldering :260+5°C max. 10+1 seconds max.

Please contact us for mass production schedule.
Specifications in this bulletin are subject to change without notice.